

SKETCH

IN THE

SE1/4NW1/4 & NE1/4 SW1/4 of SECTION 36
TOWNSHIP 65 NORTH, RANGE 1 WEST, B.M.
BOUNDARY COUNTY, IDAHO

NE 1/4 NW 1/4

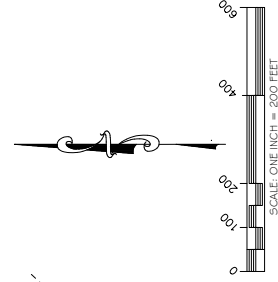
FOR
WAIDE FLEMING

W 1/2 NW 1/4

LINE TABLE

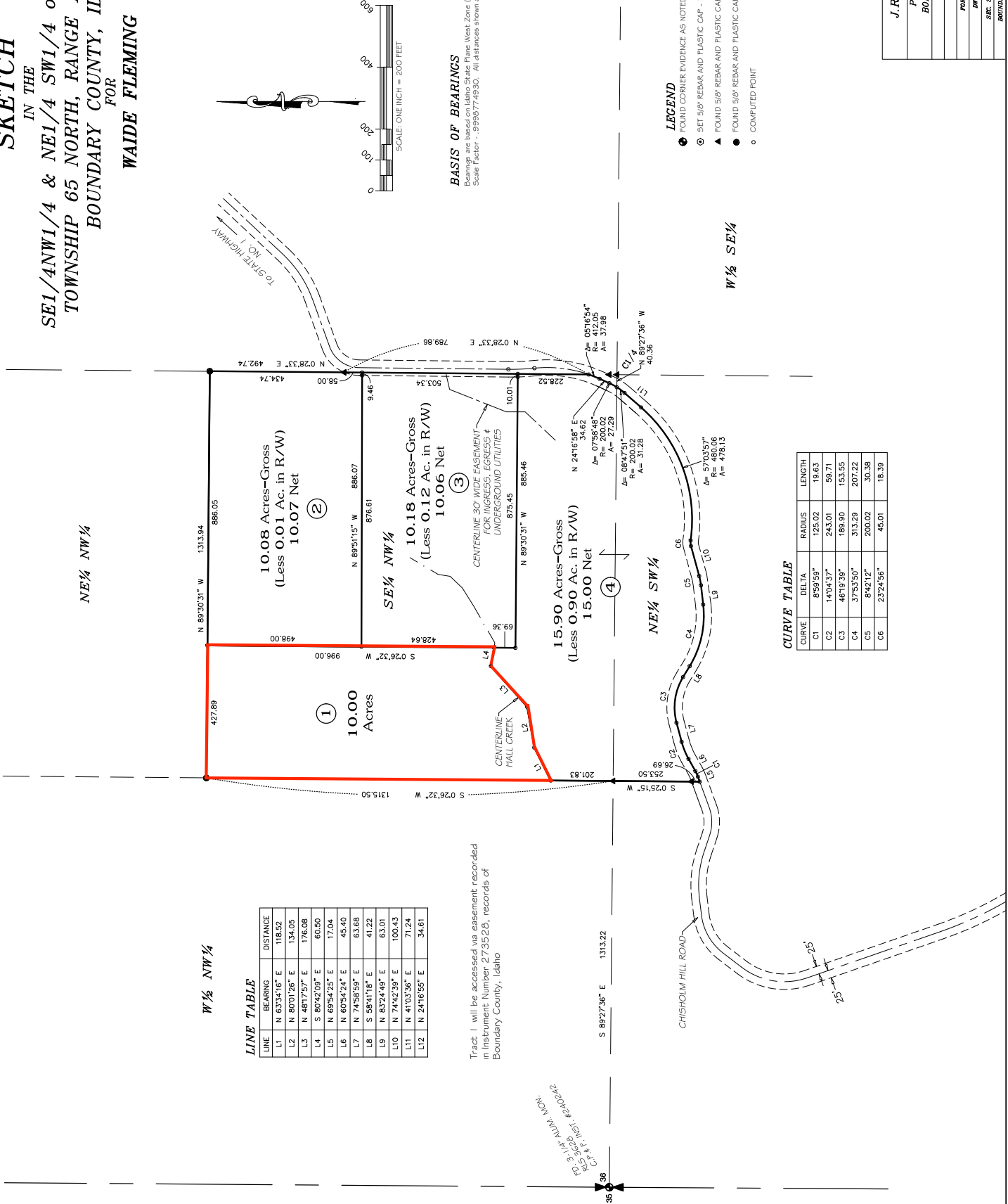
LINE	BEARING	DISTANCE
L1	N 63°34'16" E	118.52
L2	N 80°01'26" E	134.05
L3	N 48°17'57" E	176.08
L4	S 80°42'09" E	60.50
L5	N 69°54'25" E	17.04
L6	N 60°54'24" E	45.40
L7	N 74°58'59" E	63.68
L8	S 58°41'18" E	41.22
L9	N 83°24'49" E	63.01
L10	N 74°42'39" E	100.43
L11	N 41°03'36" E	71.24
L12	N 24°16'55" E	34.61

Tract 1 will be accessed via easement recorded in instrument Number 273526, records of Boundary County, Idaho



BASIS OF BEARINGS

Bearings are based on Idaho State Plane, West Zone (1103), NAD83
Scale Factor = .9998774930. All distances shown are converted to ground.



CURVE TABLE

CURVE	DELTA	RADIUS	LENGTH
C1	8°59'59"	125.02	19.63
C2	14°24'37"	243.01	56.71
C3	46°19'39"	189.90	153.55
C4	37°53'50"	313.29	207.22
C5	8°42'12"	200.02	30.38
C6	23°24'56"	45.01	18.39

- ### LEGEND
- FOUND CORNER EVIDENCE AS NOTED
 - ⊙ SET 5/8" REBAR AND PLASTIC CAP - PLS 3625
 - ▲ FOUND 5/8" REBAR AND PLASTIC CAP - PLS 3628
 - FOUND 5/8" REBAR AND PLASTIC CAP - PLS 7977
 - COMPUTED POINT

J.R.S. SURVEYING, INC.
PO BOX 3099-8476 MAIN
BONNERS FERRY, ID. 83805
(208) 267-7555

SKETCH	
FOR WAIDE FLEMING	REVISION NO. 1
DRAWN BY: JMS/PLK	12-06-2018
SURV. BY: TREN, RWF, B.M.	SHEET 1 OF 1
BOUNDARY COUNTY, IDAHO	JOB NO. 18-199